



# Round Table on Remand (Pre-trial) Detention

Jean Redpath

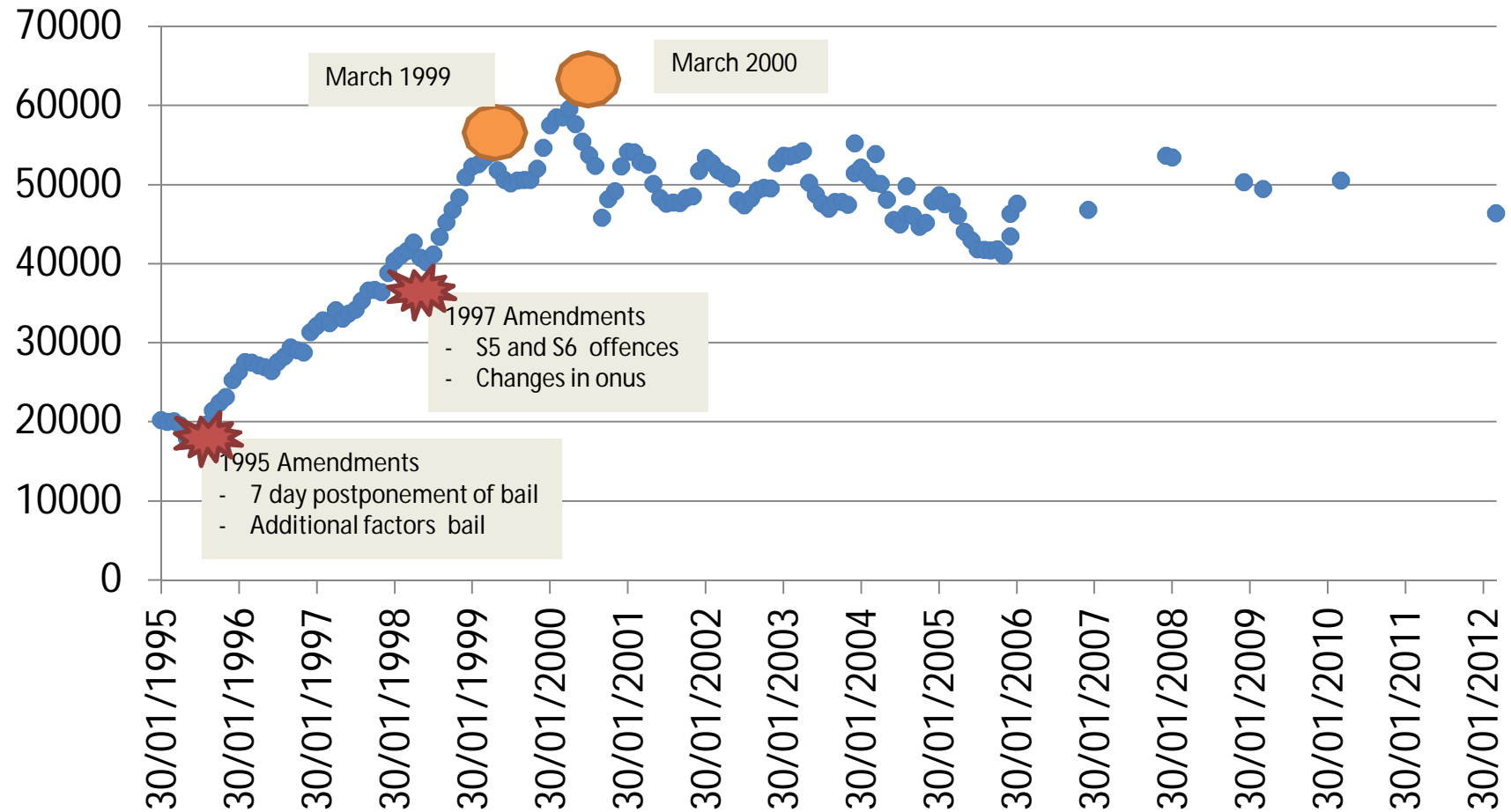
*Breakwater Lodge, Cape Town  
Thursday 23 May 2013*

# Data on Remand Detention

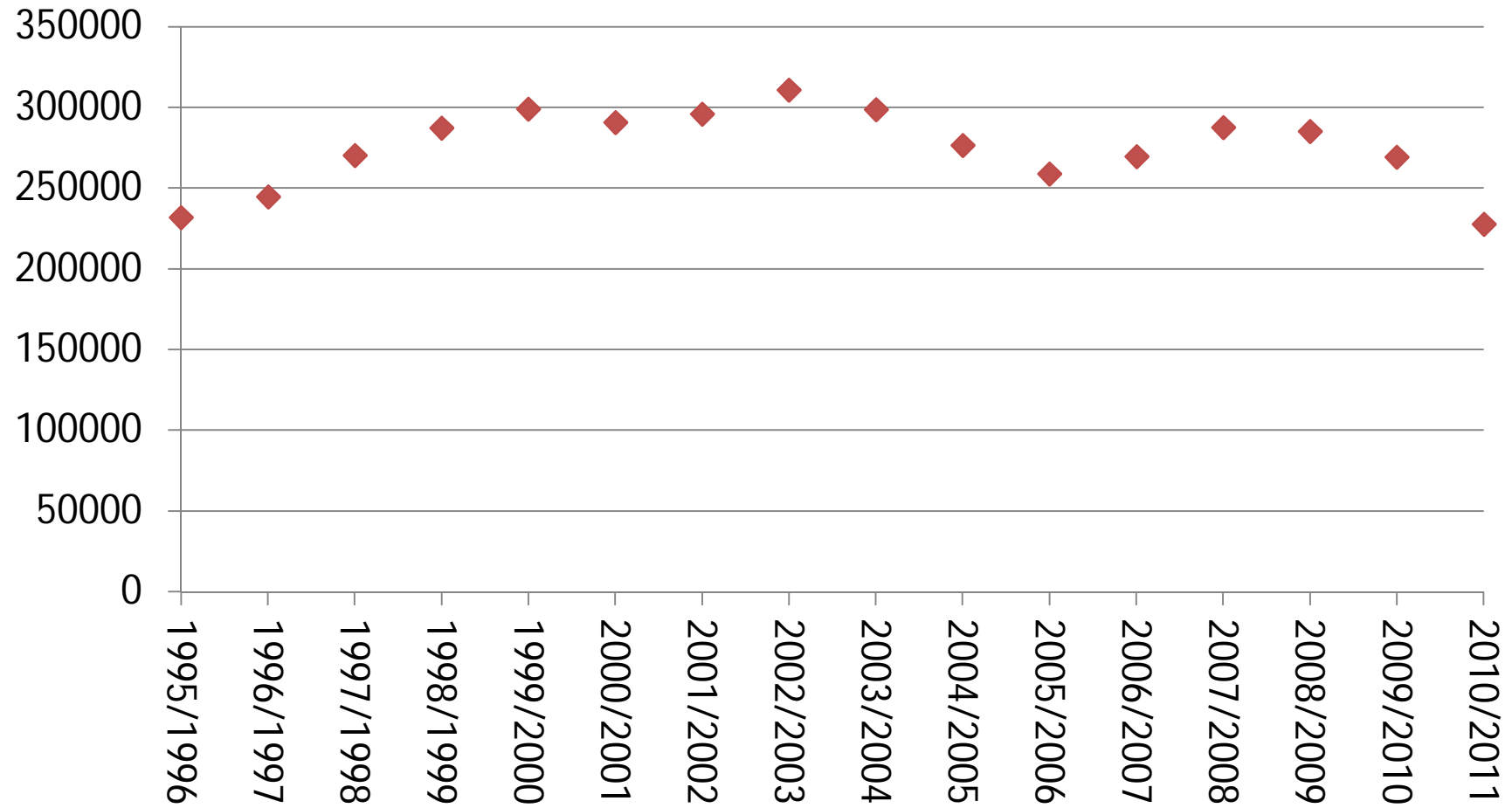
Trends and **inferences** from:

- Total size of remand population
- Sentenced and remand admissions
- Ratio of remand to sentenced admissions
- Ratio of remand to sentenced population
- Racial and provincial remand trends
- Duration of remand detention.

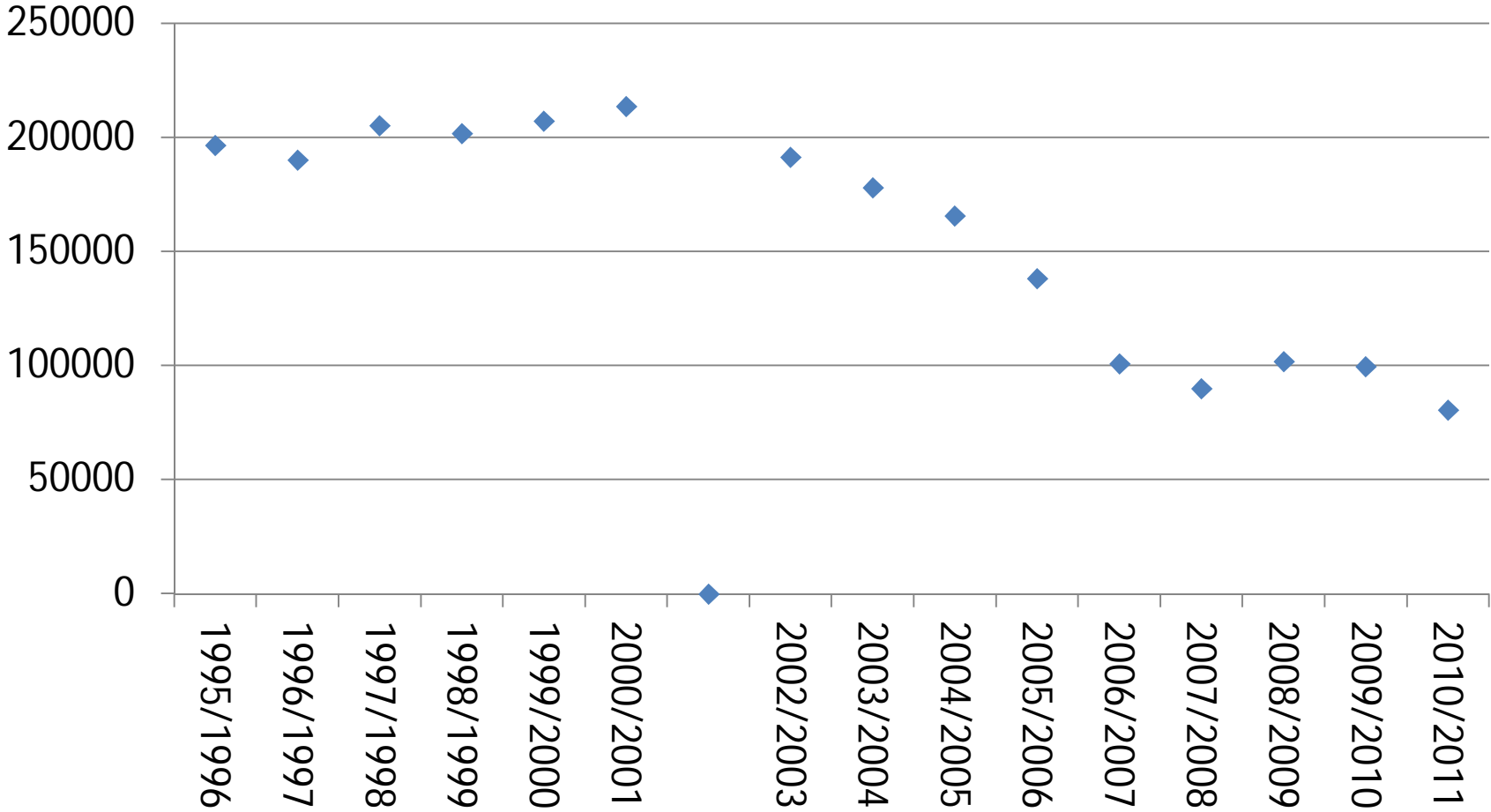
# 1. Remand population as at month-end 1995-2012



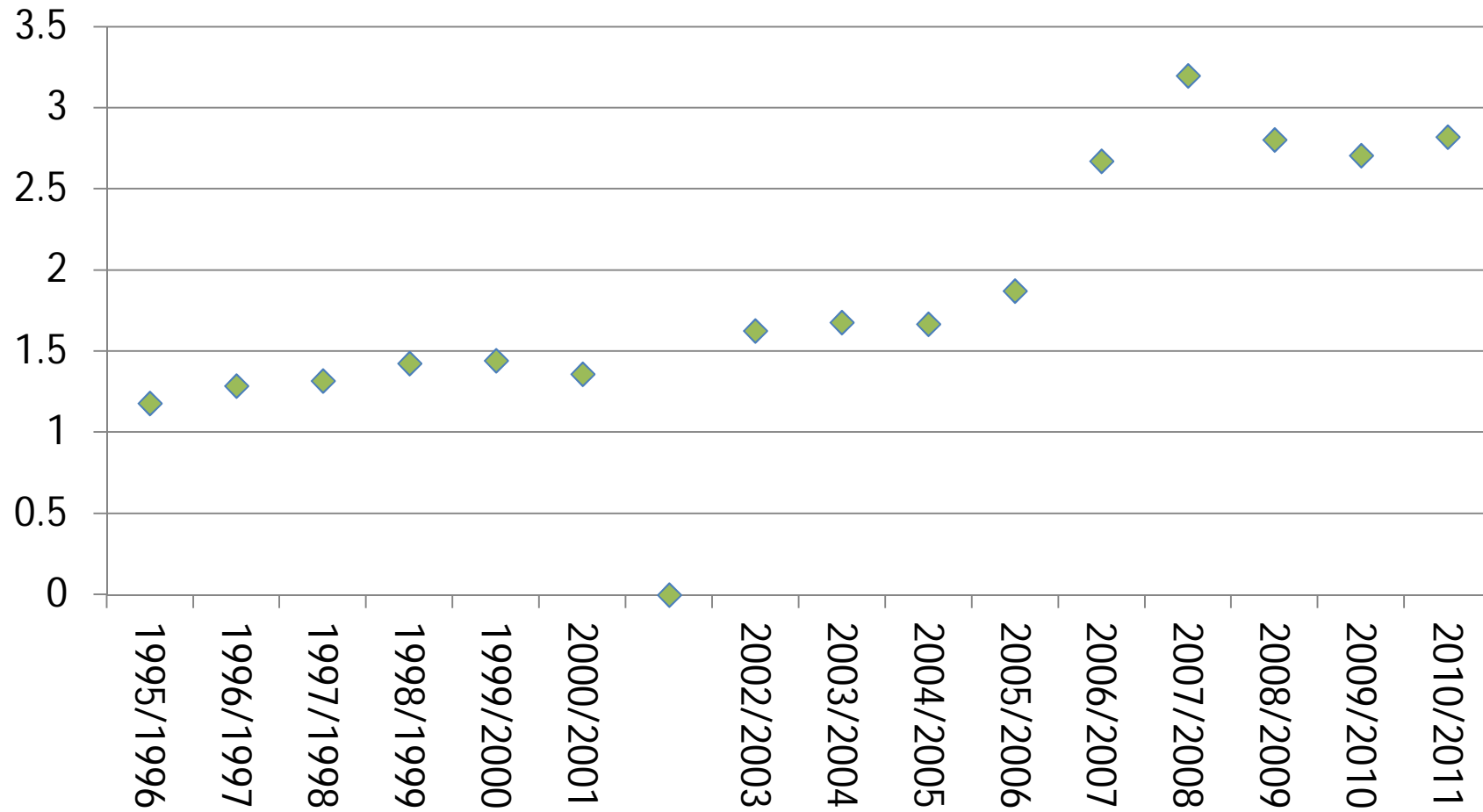
## 2. Yearly total admissions to remand detention 1995 - 2011



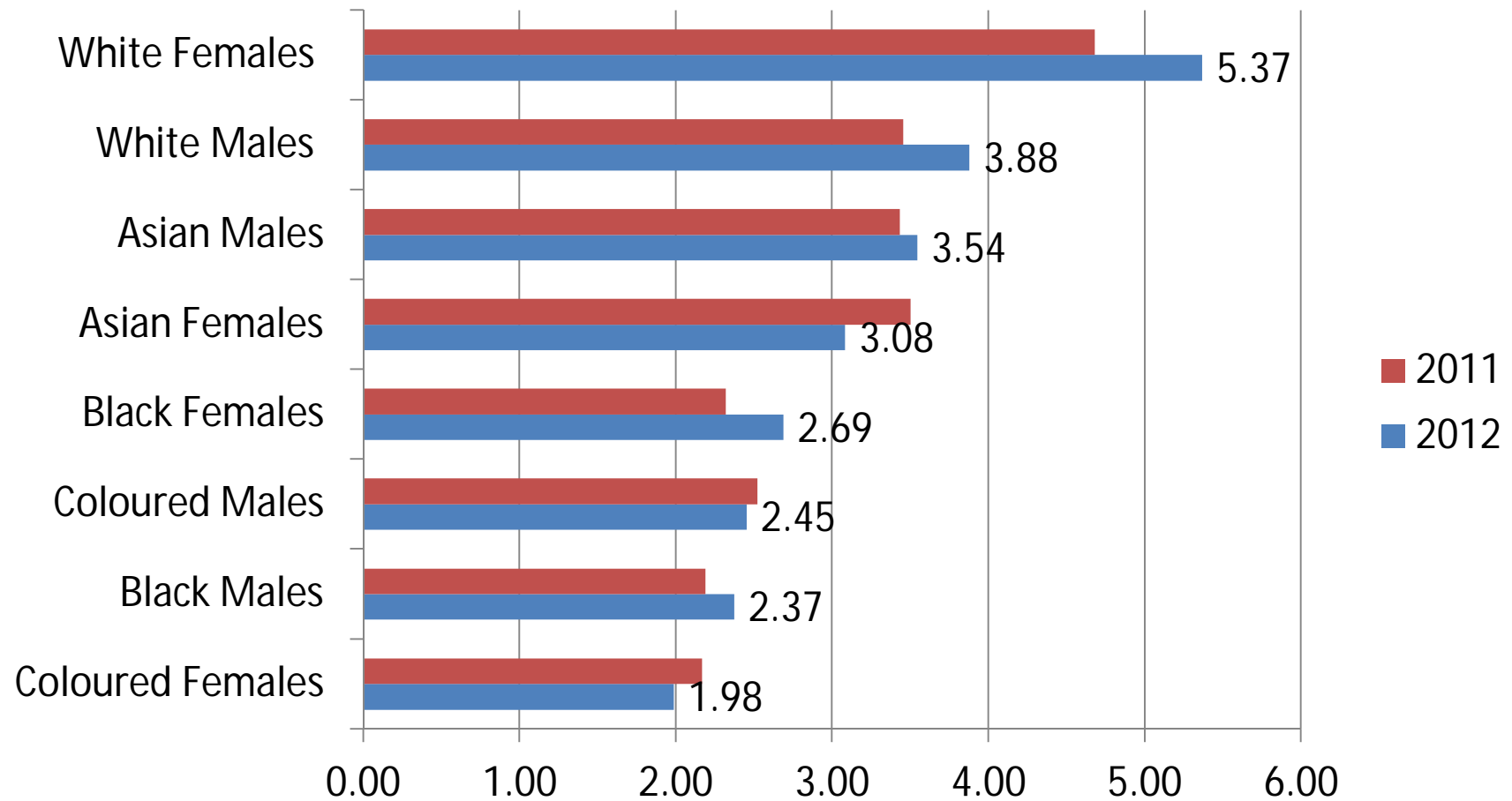
# 3. Total sentenced admissions per year



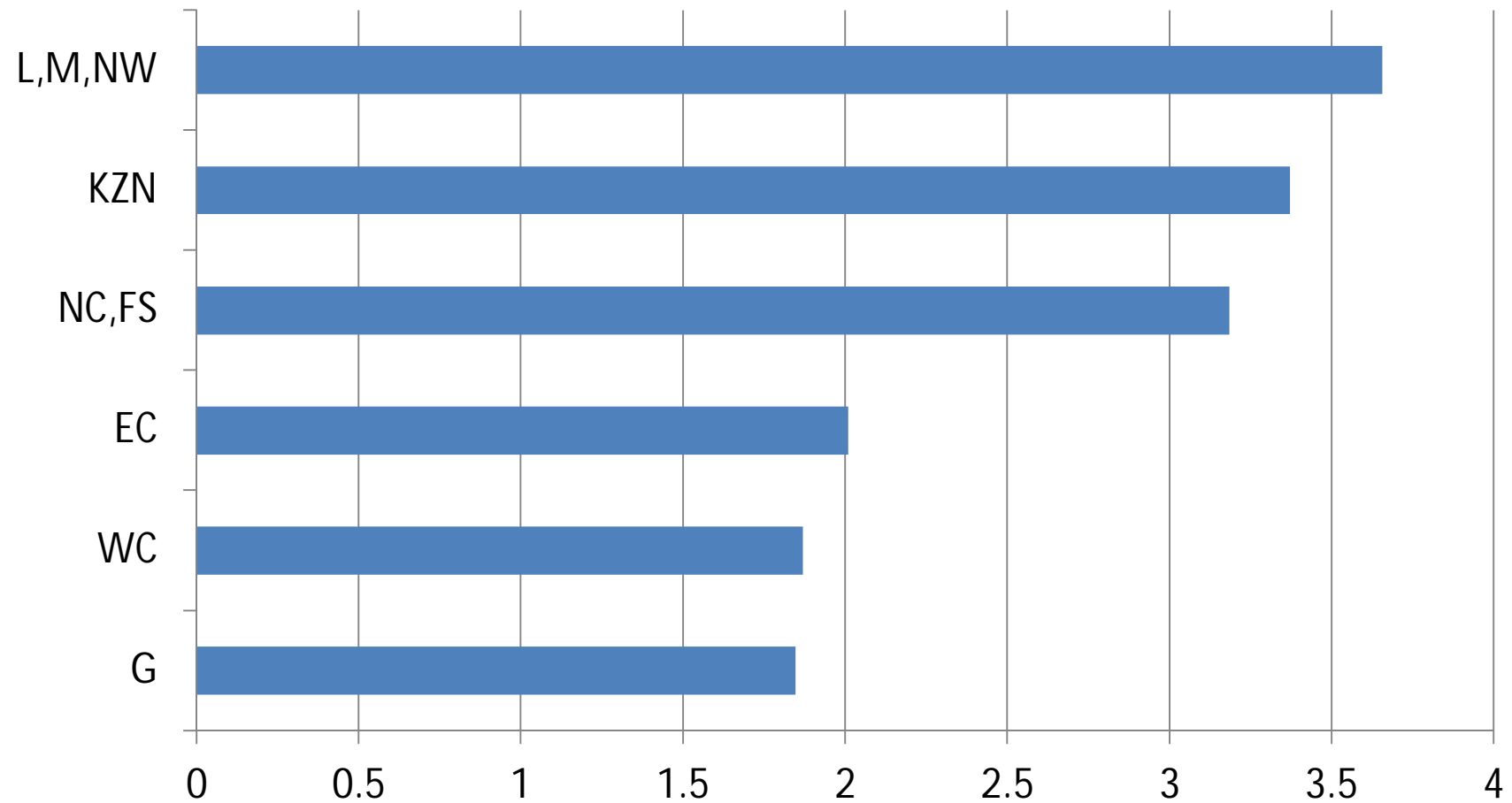
## 4. Number of remand admissions per sentenced admission, 1995-2011



# 5. Ratio of sentenced to remand by race and gender 2011 and 2012



## 6. Ratio of sentenced to remand by 'province' 2012







## **Jonathan Davids (22)**

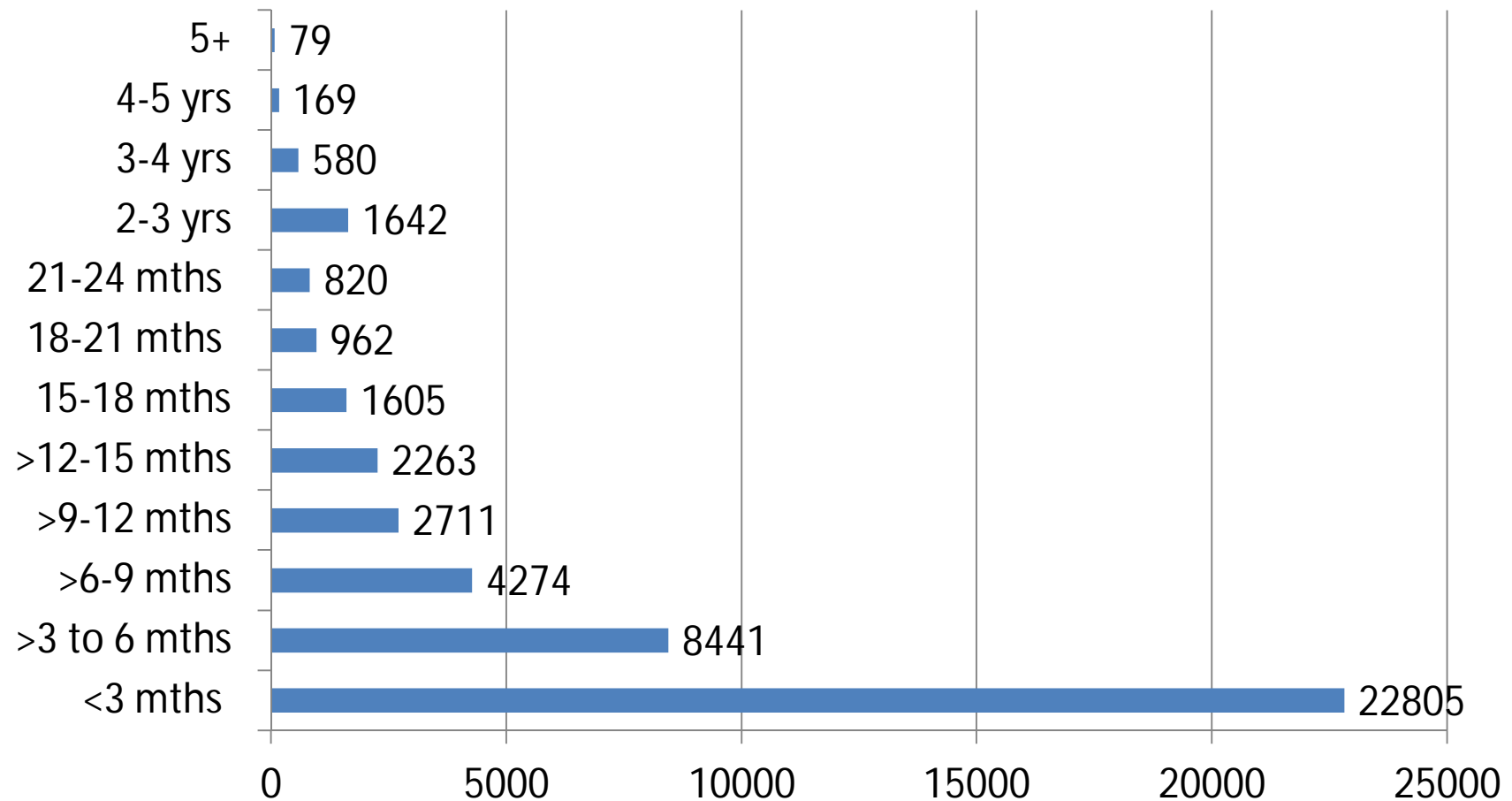
Released after four months on remand. DNA evidence failed to link him to the rape and murder of Anene Booysen. How does four months compare duration of pre-trial detention experienced by other remand detainees?

# Duration of remand detention

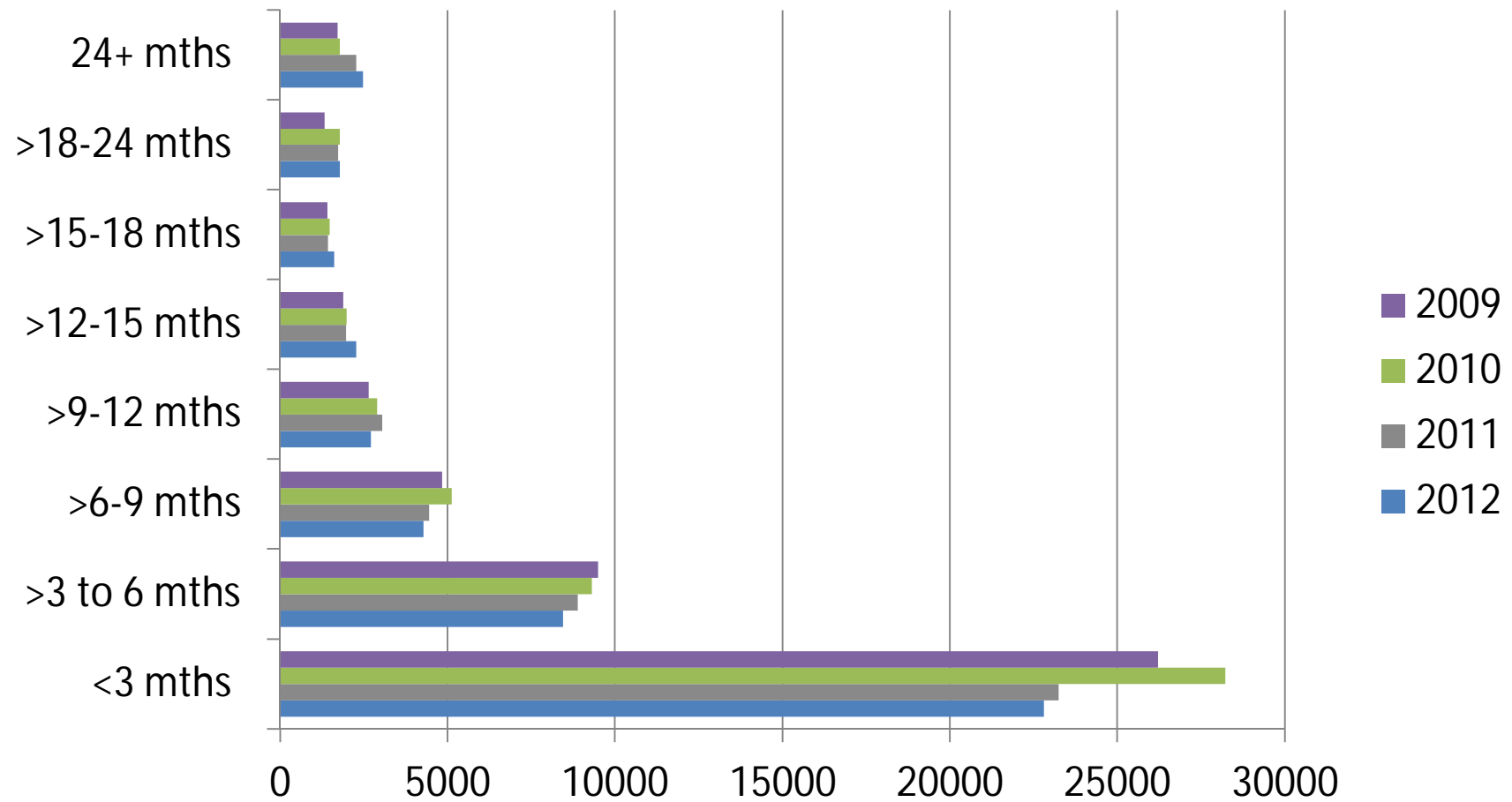
DCS Annual Performance Plan 2012 says 'average duration of remand detention'

- in 2008/9 was 150 days (5 months)
- in 2009/10 was 142 days
- In 2010/11 was 138 days.

# 7. Time spent in custody by remand detainees as at March 2012



# 8. Time spent in custody as at March, 2009-2012



# Measures of duration 2012

## Median (middle value)

- Lies somewhere between 90 and 180 days

## First quartile (25% are less than this)

- Lies at less than 90 days

## Third quartile (25% are more than this)

- Lies somewhere between 180 and 365 days

## Maximum

- Is in excess of 1825 days

[www.ppja.org](http://www.ppja.org)